

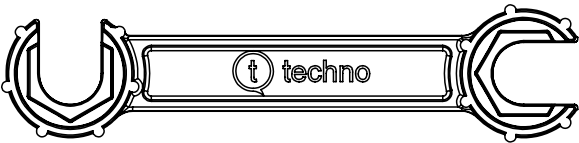
Tolleranze generali

Particolari stampati in materiale termoplastico: rif ISO 2768MK - Particolari lavorati alle macchine utensili: rif. UNI EN 22768
Particolari tranciati in metallo: rif. UNI EN 22768 - grado IT10 per dim. lineari - grado IT11 quote di piega - angoli di piega ` ± 1

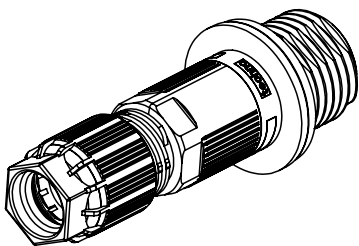
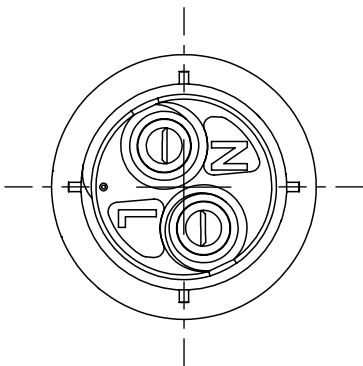
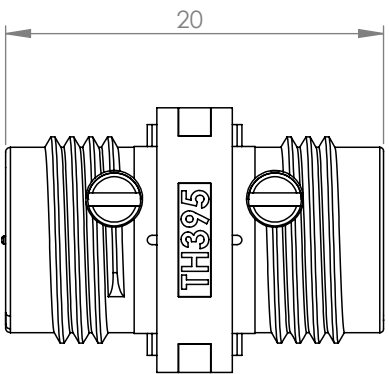
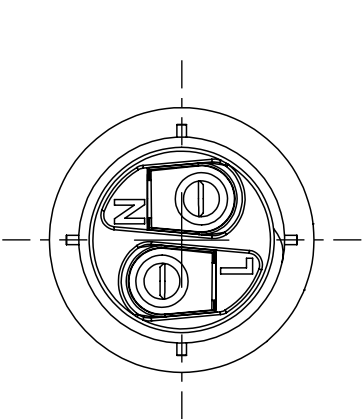
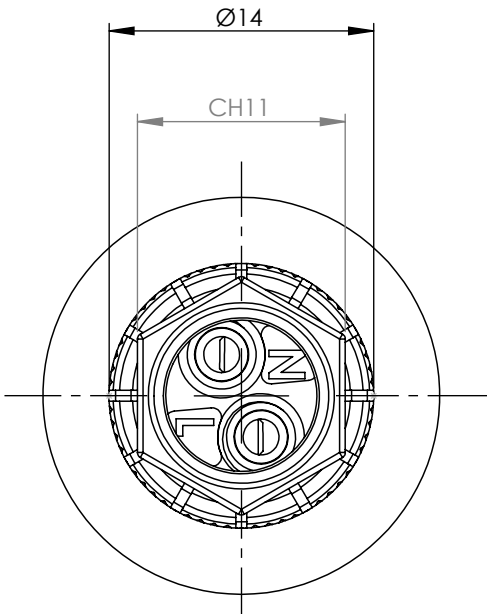
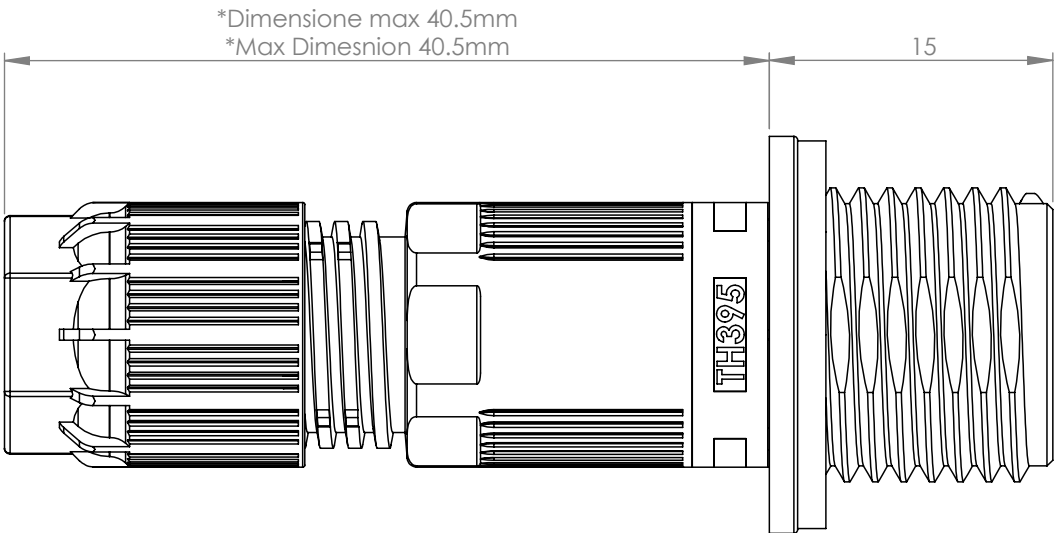
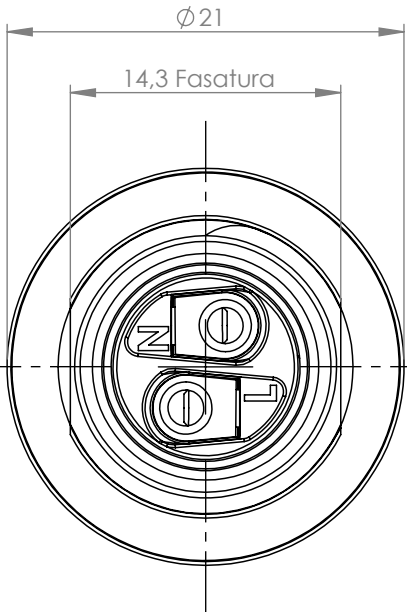
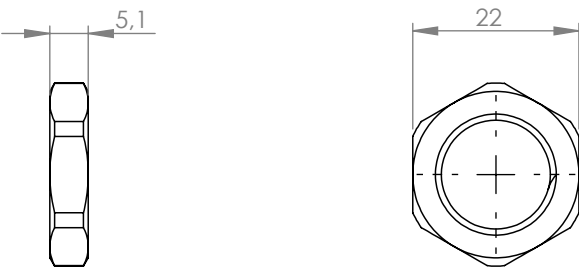
*= Quota variabile per tipologia di cavo
Variable dimension by type of cable

ACCESSORI/ACCESSORIES

Cod. 6000462KC



Cod. 6000046CC



<div>Attenzione: Questo disegno è proprietà intellettuale della Techno srl e non può essere copiato, ristampato, o comunque utilizzato senza autorizzazione scritta della Techno srl. This drawing and all informations contained here cannot be used or reproduced, integrally or partially, without Techno srl written authorization.</div>	Materiale-Material:			Titolo-Title:								
	Trattamento-Treatment:			Micro Joint Panel mounted Connector 2P Screw L/N IP68								
	N° documento cliente Customer ref			Peso [gr]: Weight [gr]:		31.76						
	Disegnato - Drawn by:		M.Strada	Data: Date:		2025-07-07						
	Controllato-Checked by:		M.Strada	Data: Date:		2025-07-16						
				Scala-Scale:		1:1						
			Formato - Format		A3		Progetto-Project:					
					TH395							
					N° Disegno - Drawing N° THB.395.N2E		Rev. Rev.		Foglio N° Sheet N°		N° Fogli N° of sheets	
					Nome file - Filename THB.395.N2E		00		1		1	